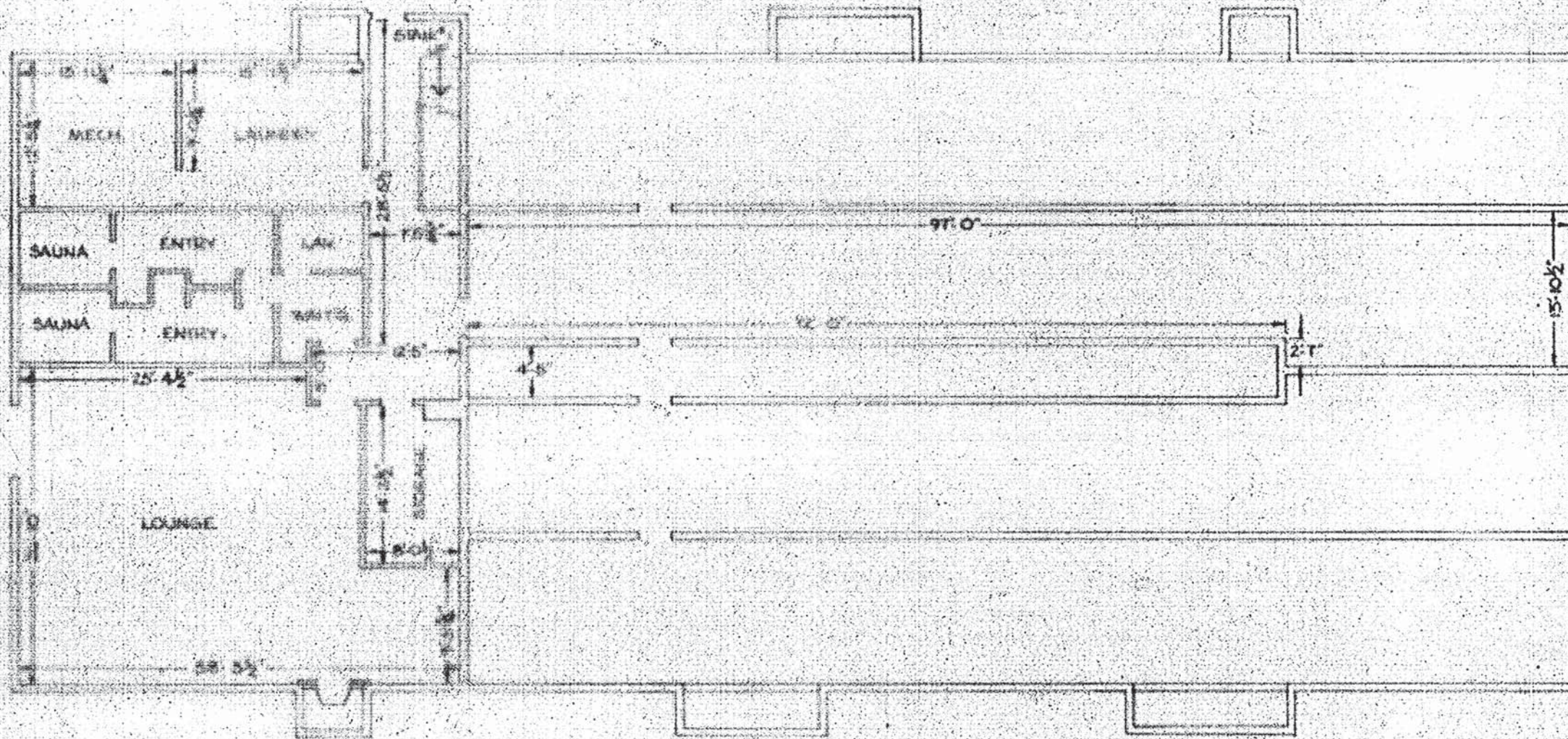


Sub. 1



Revised
3/7/77
J.C.

NOTES
 PLAN IS TO BE TAKEN FROM PLANS FOR BLDG. #2 BY
 RICHARD W. COLE, A REGISTERED ARCHITECT, AND
 DATED 12-1-1977.
 DIMENSIONS SHOWN ARE ACTUAL MEASUREMENTS
 TAKEN BY R.W.C. IN FEB. 1977.

I, ROBERT M. ARONSON, A REGISTERED PROFESSIONAL ENGINEER
 IN THE STATE OF VERMONT, HEREBY CERTIFY THAT TO THE BEST
 OF MY KNOWLEDGE, INFORMATION AND BELIEF, THIS PLAN
 ACCURATELY DEPICTS THE DIMENSIONS AS BUILT OR AS INDICATED.
 DATED THIS 7TH DAY OF MARCH 1977.

Robert M. Aronson
 ROBERT M. ARONSON
 CIVIL ENGINEER



NOT VALID
 UNTIL SEALED

ACE ENGINEERING & SURVEYING CORP.
 PROFESSIONAL ENGINEERS & SURVEYORS
 KILLINGTON GATEWAY II
 DEVELOPMENT CORP.
 BLDG. #2, BASEMENT, COMMON AREA
 OFF. U.S. RTE. #4, MENDON, VERMONT
 SHEET 6 OF 6
 SCALE: 1/8" = 1'-0" DATE: 3-7-1977
 DRAWN BY: JOHN CLOGSTON